

# Alto Sax Grade 5 Scales

## ABRSM

All Scales to be played either tongued or slurred.  
Minor Scales: you can play **either** Melodic **or** Harmonic for your exam

G Major

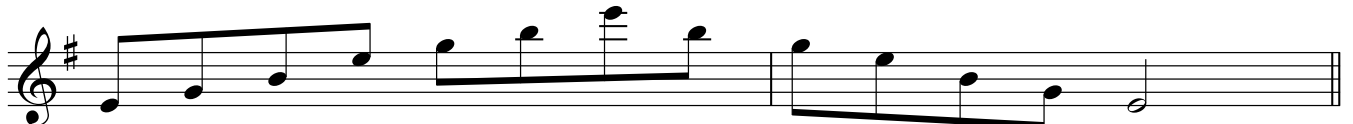


Musical notation for the G Major scale, showing ascending and descending lines. The key signature has one sharp (F#).

E Harmonic Minor

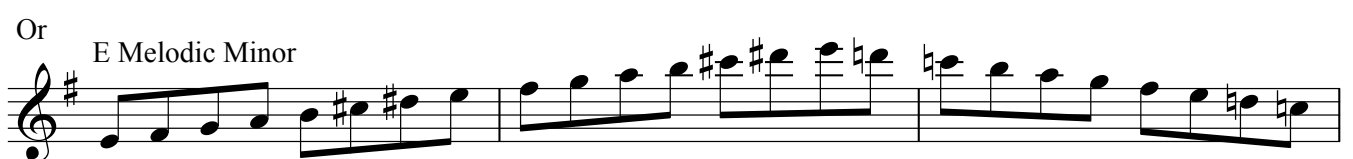


Musical notation for the E Harmonic Minor scale, showing ascending and descending lines. The key signature has one sharp (F#).



Musical notation for the E Harmonic Minor scale, showing ascending and descending lines. The key signature has one sharp (F#).

Or  
E Melodic Minor

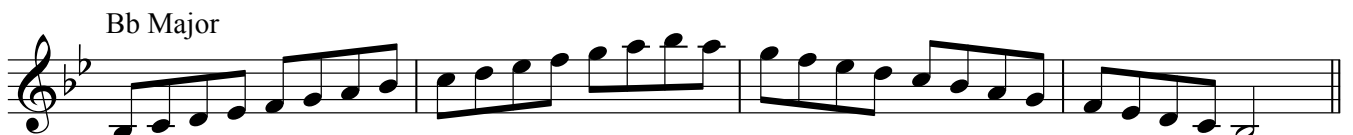


Musical notation for the E Melodic Minor scale, showing ascending and descending lines. The key signature has one sharp (F#).



Musical notation for the E Melodic Minor scale, showing ascending and descending lines. The key signature has one sharp (F#).

Bb Major



Musical notation for the Bb Major scale, showing ascending and descending lines. The key signature has two flats (Bb, Eb).



Musical notation for the Bb Major scale, showing ascending and descending lines. The key signature has two flats (Bb, Eb).

D Major



Musical notation for the D Major scale, showing ascending and descending lines. The key signature has two sharps (F#, C#).



Musical notation for the D Major scale, showing ascending and descending lines. The key signature has two sharps (F#, C#).

B Harmonic Minor

Two staves of musical notation for the B Harmonic Minor scale. The first staff shows the ascending scale: B4, C#4, D4, E4, F#4, G4, A4, B4. The second staff shows the descending scale: A4, G4, F#4, E4, D4, C#4, B4.

Or

B Melodic Minor

Two staves of musical notation for the B Melodic Minor scale. The first staff shows the ascending scale: B4, C#4, D4, E4, F#4, G#4, A4, B4. The second staff shows the descending scale: A4, G#4, F#4, E4, D4, C#4, B4.

A Major

Two staves of musical notation for the A Major scale. The first staff shows the ascending scale: A4, B4, C#4, D4, E4, F#4, G#4, A4. The second staff shows the descending scale: G#4, F#4, E4, D4, C#4, B4, A4.

F# Harmonic Minor

Two staves of musical notation for the F# Harmonic Minor scale. The first staff shows the ascending scale: F#4, G#4, A4, B4, C#4, D4, E4, F#4. The second staff shows the descending scale: E4, D4, C#4, B4, A4, G#4, F#4.

Or

F# Melodic Minor

Two staves of musical notation for the F# Melodic Minor scale. The first staff shows the ascending scale: F#4, G#4, A4, B4, C#4, D#4, E4, F#4. The second staff shows the descending scale: E4, D#4, C#4, B4, A4, G#4, F#4.

Ab Major

Two staves of musical notation for the Ab Major scale. The first staff shows the ascending scale: Ab4, Bb4, Cb4, Db4, Eb4, Fb4, Gb4, Ab4. The second staff shows the descending scale: Gb4, Fb4, Eb4, Db4, Cb4, Bb4, Ab4.

F Harmonic Minor

Two staves of musical notation for the F Harmonic Minor scale. The first staff shows the ascending scale: F4, G4, Ab4, Bb4, Cb4, Db4, Eb4, F4. The second staff shows the descending scale: Eb4, Db4, Cb4, Bb4, Ab4, G4, F4.

Or

F Melodic Minor

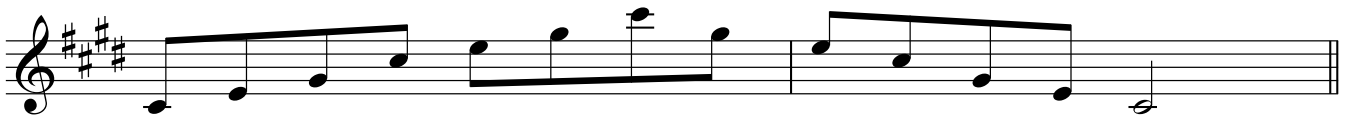
Two staves of musical notation for the F Melodic Minor scale. The first staff shows the ascending scale: F4, G4, Ab4, Bb4, Cb4, Db4, Eb4, F4. The second staff shows the descending scale: Eb4, Db4, Cb4, Bb4, Ab4, G4, F4.

E major

Two staves of musical notation for the E major scale. The first staff shows the ascending scale: E4, F#4, G#4, A4, B4, C#4, D#4, E4. The second staff shows the descending scale: D#4, C#4, B4, A4, G#4, F#4, E4.



C# Harmonic Minor



Or

C# Melodic Minor



Eb Major



A Harmonic Minor

Or

A Melodic Minor

The first section contains two staves of music. The top staff is labeled 'A Harmonic Minor' and shows an ascending scale from A4 to A5 with a natural A, followed by a descending scale with a sharp A. The bottom staff is labeled 'Or A Melodic Minor' and shows an ascending scale from A4 to A5 with a natural A, followed by a descending scale with a natural A.

Chromatic Scale on D

The second section contains two staves of music. The top staff shows an ascending chromatic scale from D4 to D5. The bottom staff shows a descending chromatic scale from D5 to D4.

Chromatic Scale on Eb

The third section contains two staves of music. The top staff shows an ascending chromatic scale from Eb3 to Eb4. The bottom staff shows a descending chromatic scale from Eb4 to Eb3.

Dominant 7th in key of Eb

The fourth section contains one staff of music showing a dominant 7th scale in the key of Eb, ascending from Eb3 to Eb4.

Dominant 7th in key of F

The fifth section contains one staff of music showing a dominant 7th scale in the key of F, ascending from F3 to F4.

Dominant 7th in key of G

The sixth section contains one staff of music showing a dominant 7th scale in the key of G, ascending from G3 to G4.

Diminished 7th on D

The seventh section contains one staff of music showing a diminished 7th scale on D, ascending from D4 to D5.